

♩ = 101

# Everlasting

by George Bellas

Drums

Drum notation for measures 1-5. Measure 1: 7/16. Measures 2-3: 7/8. Measure 4: 3/16. Measure 5: 2/8. Measure 6: 5/16.

Drums

Drum notation for measures 7-11. Measure 7: 5/16. Measure 8: 3/8. Measure 9: 7/16. Measure 10: 7/8. Measure 11: 11/16.

Drums

Drum notation for measures 12-16. Measure 12: 11/16. Measure 13: 7/8. Measure 14: 7/8. Measure 15: 7/8. Measure 16: 7/8.

Drums

Drum notation for measures 17-21. Measure 17: 7/8. Measure 18: 7/8. Measure 19: 7/8. Measure 20: 7/8. Measure 21: 15/16.

Drums

Drum notation for measures 22-26. Measure 22: 15/16. Measure 23: 7/8. Measure 24: 7/8. Measure 25: 7/8. Measure 26: 11/16.

Drums

Drum notation for measures 27-31. Measure 27: 7/8. Measure 28: 7/8. Measure 29: 7/8. Measure 30: 7/8. Measure 31: 15/16.

Drums

Drum notation for measures 32-36. Measure 32: 15/16. Measure 33: 7/8. Measure 34: 7/8. Measure 35: 7/8. Measure 36: 11/16.

Drums

Drum notation for measures 37-41. Measure 37: 7/8. Measure 38: 7/8. Measure 39: 7/8. Measure 40: 7/8. Measure 41: 15/16.

Drums

Drum notation for measures 42-46. Measure 42: 15/16. Measure 43: 7/8. Measure 44: 7/8. Measure 45: 7/8. Measure 46: 5/8.

Drums

Drum notation for measures 47-51. Measure 47: 7/8. Measure 48: 7/8. Measure 49: 7/8. Measure 50: 7/8. Measure 51: 13/8.

Drums

13/8

Drums

13/8

Drums

15/8

Drums

15/8

Drums

13/8

Drums

15/8

Drums

13/8

Drums

13/8

Drums

15/8

Drums

15/8

Drums

Drums

Drums

Drums

Drums

Drums

Drums

Drums

Drums

Drums

Drums

17  
16

This block shows a single staff of music for drums. The key signature has three sharps (F#, C#, G#) and the time signature is 3/4. The notation includes a double bar line at the beginning, followed by a series of notes and rests. A measure rest is present in the second measure. The staff ends with a double bar line and the measure numbers 17 and 16.

Drums

16  
4

This block shows a single staff of music for drums. The key signature has three sharps (F#, C#, G#) and the time signature is 3/4. The notation includes a double bar line at the beginning, followed by a series of notes and rests. A measure rest is present in the second measure. The staff ends with a double bar line and the measure numbers 16 and 4.

Drums

4  
4

This block shows a single staff of music for drums. The key signature has three sharps (F#, C#, G#) and the time signature is 3/4. The notation includes a double bar line at the beginning, followed by a series of notes and rests. A measure rest is present in the second measure. The staff ends with a double bar line and the measure numbers 4 and 4.

Drums

4  
4

This block shows a single staff of music for drums. The key signature has three sharps (F#, C#, G#) and the time signature is 3/4. The notation includes a double bar line at the beginning, followed by a series of notes and rests. A measure rest is present in the second measure. The staff ends with a double bar line and the measure numbers 4 and 4.

Drums

16  
16

This block shows a single staff of music for drums. The key signature has three sharps (F#, C#, G#) and the time signature is 3/4. The notation includes a double bar line at the beginning, followed by a series of notes and rests. A measure rest is present in the second measure. The staff ends with a double bar line and the measure numbers 16 and 16.

Drums

16  
4

This block shows a single staff of music for drums. The key signature has three sharps (F#, C#, G#) and the time signature is 3/4. The notation includes a double bar line at the beginning, followed by a series of notes and rests. A measure rest is present in the second measure. The staff ends with a double bar line and the measure numbers 16 and 4.

Drums

4  
4

This block shows a single staff of music for drums. The key signature has three sharps (F#, C#, G#) and the time signature is 3/4. The notation includes a double bar line at the beginning, followed by a series of notes and rests. A measure rest is present in the second measure. The staff ends with a double bar line and the measure numbers 4 and 4.

Drums

4  
4

This block shows a single staff of music for drums. The key signature has three sharps (F#, C#, G#) and the time signature is 3/4. The notation includes a double bar line at the beginning, followed by a series of notes and rests. A measure rest is present in the second measure. The staff ends with a double bar line and the measure numbers 4 and 4.

Drums

16  
16

This block shows a single staff of music for drums. The key signature has three sharps (F#, C#, G#) and the time signature is 3/4. The notation includes a double bar line at the beginning, followed by a series of notes and rests. A measure rest is present in the second measure. The staff ends with a double bar line and the measure numbers 16 and 16.

Drums

16  
13  
16

This block shows a single staff of music for drums. The key signature has three sharps (F#, C#, G#) and the time signature is 3/4. The notation includes a double bar line at the beginning, followed by a series of notes and rests. A measure rest is present in the second measure. The staff ends with a double bar line and the measure numbers 16, 13, and 16.

Drums

Drum notation for measures 13 and 14. The key signature is three sharps (F#, C#, G#) and the time signature is 16/16. The notation is written on a bass clef staff. Measure 13 starts with a double bar line and contains a series of eighth notes. Measure 14 continues the pattern with eighth notes and includes a triplet of eighth notes.

Drums

Drum notation for measures 14 and 15. The key signature is three sharps and the time signature is 16/16. Measure 14 continues the eighth-note pattern. Measure 15 features a triplet of eighth notes followed by eighth notes.

Drums

Drum notation for measures 15 and 16. The key signature is three sharps and the time signature is 16/16. Measure 15 continues the eighth-note pattern. Measure 16 features a triplet of eighth notes followed by eighth notes.

Drums

Drum notation for measures 16 and 17. The key signature is three sharps and the time signature is 16/16. Measure 16 continues the eighth-note pattern. Measure 17 features a triplet of eighth notes followed by eighth notes.

Drums

Drum notation for measures 17 and 18. The key signature is three sharps and the time signature is 16/16. Measure 17 continues the eighth-note pattern. Measure 18 features a triplet of eighth notes followed by eighth notes.

Drums

Drum notation for measures 18 and 19. The key signature is three sharps and the time signature is 16/16. Measure 18 continues the eighth-note pattern. Measure 19 features a triplet of eighth notes followed by eighth notes.

Drums

Drum notation for measures 19 and 20. The key signature is three sharps and the time signature is 16/16. Measure 19 continues the eighth-note pattern. Measure 20 features a triplet of eighth notes followed by eighth notes.

Drums

Drum notation for measures 20 and 21. The key signature is three sharps and the time signature is 16/16. Measure 20 continues the eighth-note pattern. Measure 21 features a triplet of eighth notes followed by eighth notes.

Drums

Drum notation for measures 21 and 22. The key signature is three sharps and the time signature is 16/16. Measure 21 continues the eighth-note pattern. Measure 22 features a triplet of eighth notes followed by eighth notes.

Drums

Drum notation for measures 22 and 23. The key signature is three sharps and the time signature is 16/16. Measure 22 continues the eighth-note pattern. Measure 23 features a triplet of eighth notes followed by eighth notes.

Drums

Musical staff for drums, measures 14-15. The staff is in bass clef with a key signature of three sharps (F#, C#, G#) and a 16/16 time signature. It features a complex rhythmic pattern with eighth and sixteenth notes, including some beamed sixteenth notes and a final measure with a double bar line.

Drums

Musical staff for drums, measures 15-16. The staff is in bass clef with a key signature of three sharps (F#, C#, G#) and a 16/16 time signature. It features a complex rhythmic pattern with eighth and sixteenth notes, including some beamed sixteenth notes and a final measure with a double bar line.

Drums

Musical staff for drums, measures 16-19. The staff is in bass clef with a key signature of three sharps (F#, C#, G#) and a 16/16 time signature. It features a complex rhythmic pattern with eighth and sixteenth notes, including some beamed sixteenth notes and a final measure with a double bar line.

Drums

Musical staff for drums, measures 19-20. The staff is in bass clef with a key signature of three sharps (F#, C#, G#) and a 16/16 time signature. It features a complex rhythmic pattern with eighth and sixteenth notes, including some beamed sixteenth notes and a final measure with a double bar line.

Drums

Musical staff for drums, measures 20-21. The staff is in bass clef with a key signature of three sharps (F#, C#, G#) and a 16/16 time signature. It features a complex rhythmic pattern with eighth and sixteenth notes, including some beamed sixteenth notes and a final measure with a double bar line.

Drums

Musical staff for drums, measures 21-22. The staff is in bass clef with a key signature of three sharps (F#, C#, G#) and a 16/16 time signature. It features a complex rhythmic pattern with eighth and sixteenth notes, including some beamed sixteenth notes and a final measure with a double bar line.

Drums

Musical staff for drums, measures 22-23. The staff is in bass clef with a key signature of three sharps (F#, C#, G#) and a 16/16 time signature. It features a complex rhythmic pattern with eighth and sixteenth notes, including some beamed sixteenth notes and a final measure with a double bar line.

Drums

Musical staff for drums, measures 23-24. The staff is in bass clef with a key signature of three sharps (F#, C#, G#) and a 16/16 time signature. It features a complex rhythmic pattern with eighth and sixteenth notes, including some beamed sixteenth notes and a final measure with a double bar line.

Drums

Musical staff for drums, measures 24-25. The staff is in bass clef with a key signature of three sharps (F#, C#, G#) and a 16/16 time signature. It features a complex rhythmic pattern with eighth and sixteenth notes, including some beamed sixteenth notes and a final measure with a double bar line.

Drums

Musical staff for drums, measures 25-26. The staff is in bass clef with a key signature of three sharps (F#, C#, G#) and a 16/16 time signature. It features a complex rhythmic pattern with eighth and sixteenth notes, including some beamed sixteenth notes and a final measure with a double bar line.

Drums

Musical notation for drums, first system. It features a treble clef and a key signature of one sharp (F#). The notation consists of a series of eighth notes on a single staff, with some notes beamed together. There are two bar lines, and the time signature 4/4 is indicated at the end of the system.

Drums

Musical notation for drums, second system. It features a treble clef and a key signature of one sharp (F#). The notation is very dense, with many notes beamed together. Above the staff, there are markings for '13/6' and '5:4'. There are two bar lines, and the time signature 5/4 is indicated at the end of the system.

Drums

Musical notation for drums, third system. It features a treble clef and a key signature of one sharp (F#). The notation consists of eighth notes with beams, and there are four '3' markings above the staff, indicating triplets. There are two bar lines, and the time signature 5/2 is indicated at the end of the system.

Drums

Musical notation for drums, fourth system. It features a treble clef and a key signature of one sharp (F#). The notation consists of eighth notes with beams, and there are four '3' markings above the staff, indicating triplets. There are two bar lines, and the time signature 5/2 is indicated at the end of the system.

Drums

Musical notation for drums, fifth system. It features a treble clef and a key signature of one sharp (F#). The notation consists of eighth notes with beams, and there are four '3' markings above the staff, indicating triplets. There are two bar lines, and the time signature 5/2 is indicated at the end of the system.

Drums

Musical notation for drums, sixth system. It features a treble clef and a key signature of one sharp (F#). The notation is very dense, with many notes beamed together. There are two bar lines, and the time signature 11/16 is indicated at the end of the system.

Drums

Musical notation for drums, seventh system. It features a treble clef and a key signature of one sharp (F#). The notation consists of eighth notes with beams, and there are four '3' markings above the staff, indicating triplets. There are two bar lines, and the time signature 11/16 is indicated at the end of the system.

Drums

Musical notation for drums, eighth system. It features a bass clef and a key signature of one sharp (F#). The notation consists of eighth notes with beams. There are two bar lines, and the time signature 11/16 is indicated at the end of the system.

Drums

Musical notation for drums, ninth system. It features a bass clef and a key signature of one sharp (F#). The notation consists of eighth notes with beams. There are two bar lines, and the time signature 11/16 is indicated at the end of the system.

Drums

Musical notation for drums, tenth system. It features a bass clef and a key signature of one sharp (F#). The notation consists of eighth notes with beams. There are two bar lines, and the time signature 11/16 is indicated at the end of the system.

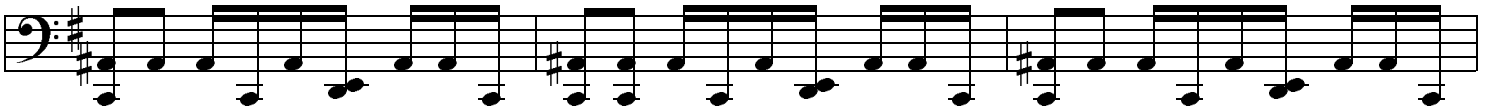
Drums



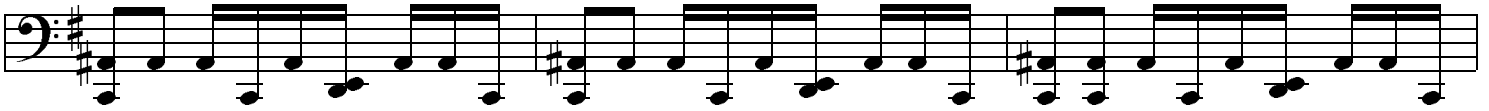
Drums



Drums



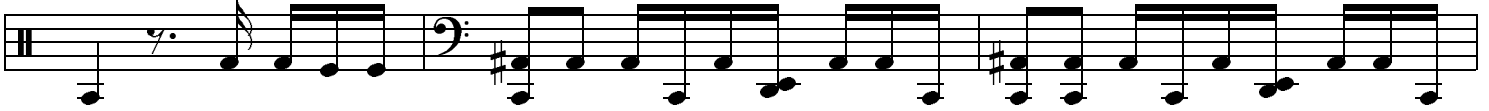
Drums



Drums



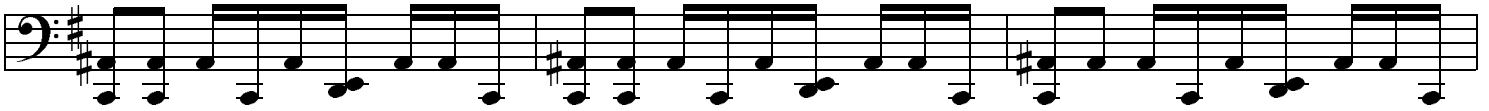
Drums



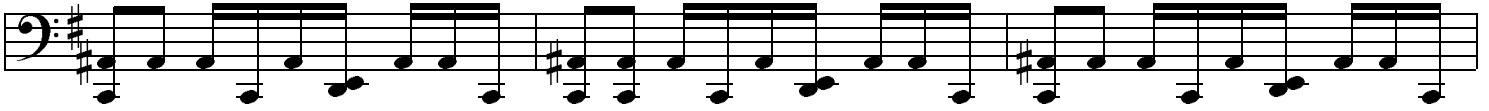
Drums



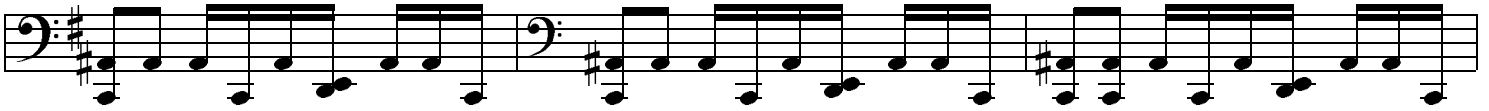
Drums



Drums



Drums





Drums

Drums

Drums

Drums

Drums

Drums

Drums

Drums

Drums

Drums

Drums

Drums

Drums

Drums

Drums

Drums

Drums

Drums

Drums

Drums

Drums

Drums

Drums

Drums

Drums

Drums

Drums

Drums

Drums

Drums

Drums



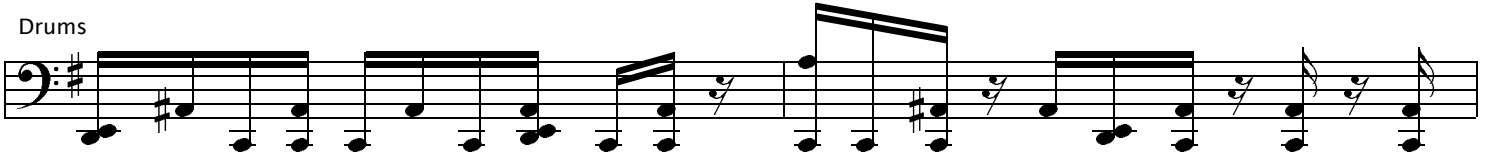
Drums



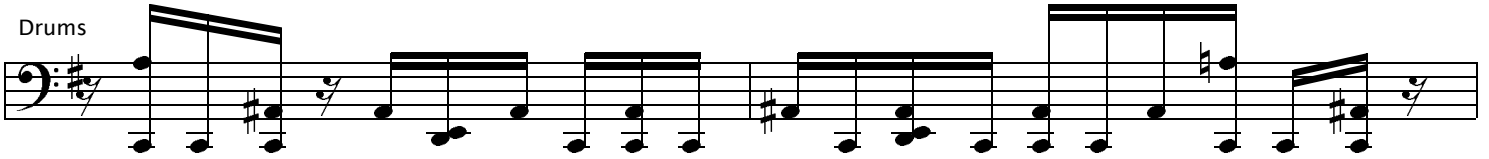
Drums



Drums



Drums



Drums



Drums



Drums



Drums



Drums



Drums

Drums

Drums

Drums

Drums

Drums

Drums

Drums

Drums

Drums

Drums

8

Drums

8

Drums

8

Drums

8

Drums

8

Drums

8

Drums

8

Drums

8

Drums

8

Drums

5:4

Drums

A musical staff for drums with a treble clef and a double bar line. It contains several notes, including a triplet of eighth notes. A bracket above the staff spans six measures, with the number '6' centered above it. The staff ends with a double bar line and a fermata.

Drums

A musical staff for drums with a treble clef and a double bar line. It contains notes and rests, including a triplet of eighth notes. The staff ends with a double bar line.

Drums

A musical staff for drums with a treble clef and a double bar line. It contains a series of rests. The staff ends with a double bar line.

Drums

A musical staff for drums with a treble clef and a double bar line. It contains a series of rests. The staff ends with a double bar line.

Drums

A musical staff for drums with a treble clef and a double bar line. It contains a series of rests. The staff ends with a double bar line.

Drums

A musical staff for drums with a treble clef and a double bar line. It contains a series of rests. There are time signature changes indicated by '2/16' and '5/2' below the staff. The staff ends with a double bar line.

Drums

A musical staff for drums with a treble clef and a double bar line. It contains a series of rests. A measure number '17' is written at the end of the staff. The staff ends with a double bar line.

Drums

A musical staff for drums with a treble clef and a double bar line. It contains notes and rests, including a triplet of eighth notes. A measure number '16' is written at the beginning of the staff. The staff ends with a double bar line.

Drums

A musical staff for drums with a treble clef and a double bar line. It contains notes and rests, including a triplet of eighth notes. The staff ends with a double bar line.

Drums

A musical staff for drums with a treble clef and a double bar line. It contains notes and rests, including a triplet of eighth notes. A measure number '20' is written at the end of the staff. The staff ends with a double bar line.

Drums

Musical notation for drums, measures 20-26. The notation is on a single staff with a treble clef and a 20/16 time signature. It features a complex rhythmic pattern with many beamed notes and rests.

Drums

Musical notation for drums, measures 27-33. The notation is on a single staff with a treble clef and a 20/16 time signature. It continues the rhythmic pattern from the previous section.

Drums

Musical notation for drums, measures 34-39. The notation is on a single staff with a treble clef and a 20/16 time signature. It shows a simpler rhythmic pattern with mostly rests.